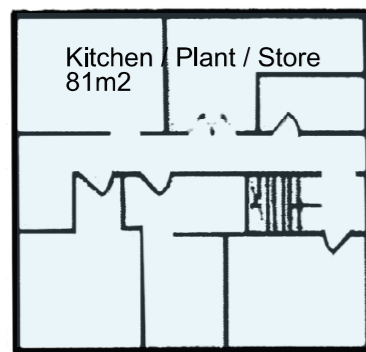
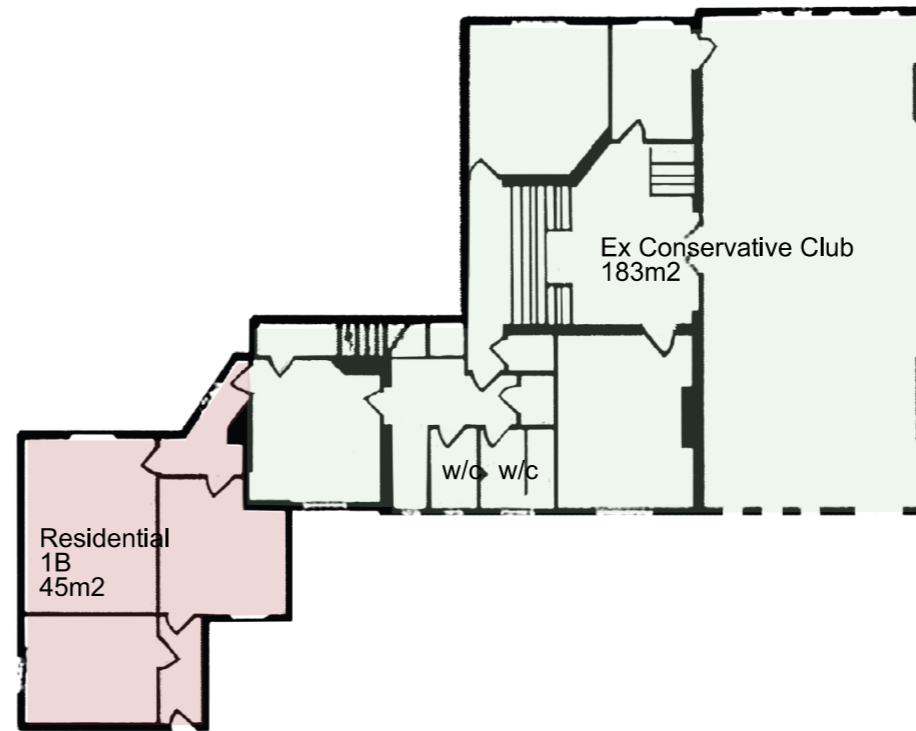


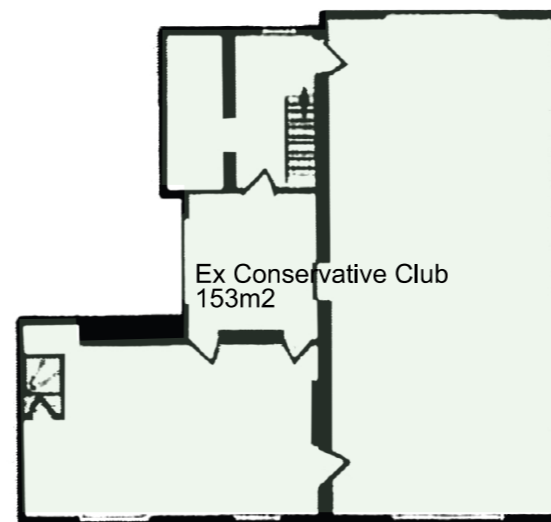
GROUND FLOOR PLAN  
581m<sup>2</sup>



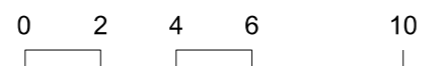
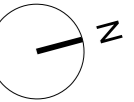
BASEMENT FLOOR PLAN  
81m<sup>2</sup>



FIRST FLOOR PLAN  
233m<sup>2</sup>



SECOND FLOOR PLAN  
153m<sup>2</sup>



110 WALM LANE, WILLESDEN, NW2 4RS

Existing Floor Plans

SCHEME A

G M L Architects

UNIT 3,1-4 Christina Street, London, EC2A 4PA  
 Tel: 020 7729 9595 Fax: 020 7729 1801 info@gmlarchitects.co.uk  
 SCALE: 1:200@A3, 1:100@A1  
 ISSUED FOR: PLANNING  
 FIRST ISSUED: 18/03/19  
 DRAWN BY: PC CHECK BY: PO 4704/SK/700