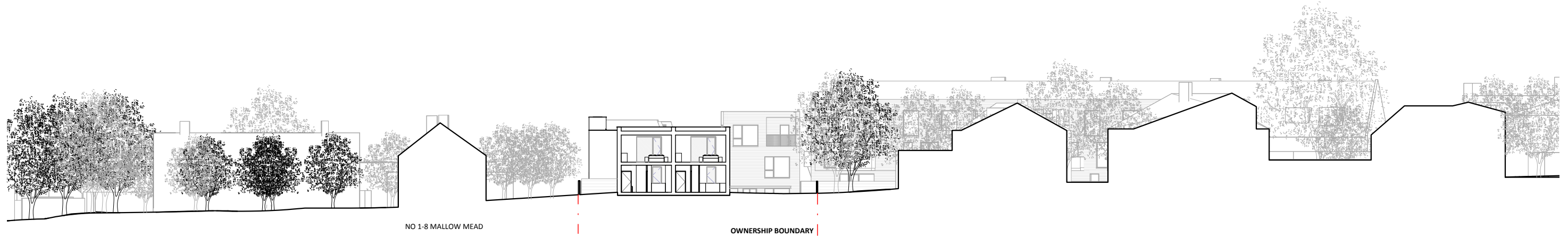


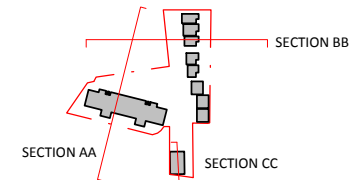
**1 Mews Section BB 100@A1**  
1 : 100



**2 Mews Section BB 200@A1**  
1 : 200

**NOTES**  
 CONSULTANTS  
 - Refer to highways consultant's drawings for details  
 - Refer to landscape consultant's drawings for details  
 - Landscaping layout is indicative only  
 AREAS  
 - Refer to area schedule  
 © Copyright Reserved. ColladoCollins Partners LLP

Rev	Notes	Date	By	Auth
PA	Planning Submission	10.07.15	MD	RC
PB	Updated Planning Issue	24.05.17	MM	FVB
PC	Planning Update	06.06.17	MM	FVB
PH	Block C top floor removed; Mews: NE Elevation window note added	08.08.17	MM	FVB



ColladoCollinsArchitects

17-19 Foley Street  
 London W1W 6DW  
 T 020 7580 3490  
 F 020 7580 2917  
 info@colladocollins.com  
 www.colladocollins.com  
 Date: 07/2016  
 Drawn By: MD  
 Checked by: FVB  
 Scale @ A1: As indicated  
 Scale @ A3: As indicated  
 CAD File No:

Dollis Mews, Mill Hill East  
 ZM Development Management Ltd  
 PROPOSED Section BB

PLANNING  
 15041 P2-102

PH  
 Revision