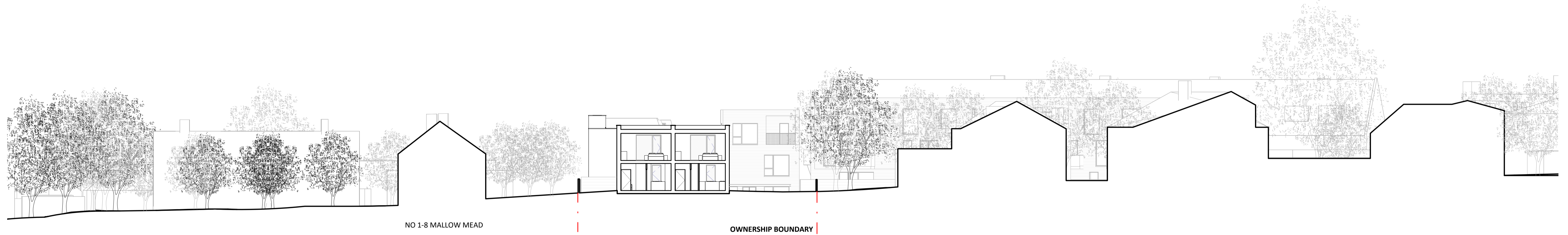


**1 Mews Section BB 100@A1**  
1 : 100



**2 Mews Section BB 200@A1**  
1 : 200

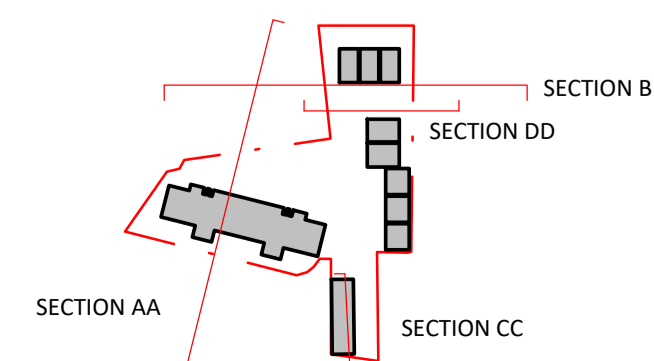
**NOTES**

CONSULTANTS  
- Refer to highways consultant's drawings for details  
- Refer to landscape consultant's drawings for details  
- Landscaping layout is indicative only

AREAS  
- Refer to area schedule

| Rev | Notes  | Date     | By | Auth |
|-----|--|----------|----|------|
| PA  | Planning Submission  | 10.07.15 | MD | RC   |
| PB  | Updated Planning Issue   | 24.05.17 | MM | FvB  |
| PC  | Planning Update  | 06.06.17 | MM | FvB  |
| PH  | Block C top floor removed; Mews: NE<br>Elevation window note added | 08.08.17 | MM | FvB  |
| PI  | Pedestrian Link Removed  | 27.11.17 | MM | FvB  |
|     |  |          |    |      |
|     |  |          |    |      |

© Copyright Reserved. ColladoCollins Partners LLP



ColladoCollinsArchitects

17-19 Foley Street  
London W1W 6DW  
T 020 7580 3490  
F 020 7580 2917  
info@colladocollins.com  
www.colladocollins.com

Date: 07/2016  
Drawn By: MD  
Checked by: FvB  
Scale @ A1: As indicated  
Scale @ A3:  
CAD File No:

Dollis Mews, Mill Hill East  
ZM Development Management Ltd  
PROPOSED Section BB

PLANNING  
15041

P2-102

PI  
Revision